

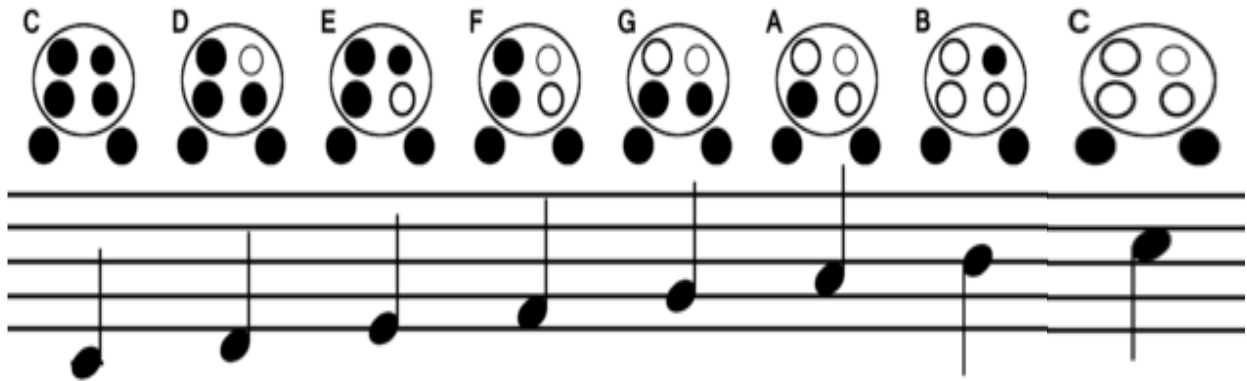
CHORS 4 KIDS

6 Hole Ocarina

YOUR SONG BOOK

C Major Scale

The C Major Scale for C Ocarina



Scales are a GREAT place to start for playing the ocarina.
Make sure not to blow too hard, or too soft!

Check that you are covering the holes really well as any air escaping will change the note!

Feliz Navidad

Fe -liz Na -vi -dad

G C B C A

The first line of music features five notes on a five-line staff: G4, A4, B4, C5, and D5. Above each note is a guitar chord diagram: G (two black dots on the 3rd and 2nd strings), C (two black dots on the 2nd and 3rd strings), B (two black dots on the 2nd and 3rd strings, one on the 4th string), C (two black dots on the 2nd and 3rd strings), and A (two black dots on the 2nd and 3rd strings).

Fe -liz Na -vi -dad

A D C A G

The second line of music features five notes on a five-line staff: E4, F4, G4, A4, and B4. Above each note is a guitar chord diagram: A (two black dots on the 2nd and 3rd strings), D (two black dots on the 2nd and 3rd strings), C (two black dots on the 2nd and 3rd strings), A (two black dots on the 2nd and 3rd strings), and G (two black dots on the 3rd and 2nd strings).

Fe -liz Na -vi -dad

G C B C A

The third line of music features five notes on a five-line staff: G4, A4, B4, C5, and D5. Above each note is a guitar chord diagram: G (two black dots on the 3rd and 2nd strings), C (two black dots on the 2nd and 3rd strings), B (two black dots on the 2nd and 3rd strings, one on the 4th string), C (two black dots on the 2nd and 3rd strings), and A (two black dots on the 2nd and 3rd strings).

Pro -spe -ro a -no fe -li -ci -dad

F G A G G G F F E

The fourth line of music features nine notes on a five-line staff: C4, D4, E4, F4, G4, A4, B4, C5, and D5. Above each note is a guitar chord diagram: F (two black dots on the 2nd and 3rd strings), G (two black dots on the 3rd and 2nd strings), A (two black dots on the 2nd and 3rd strings), G (two black dots on the 3rd and 2nd strings), G (two black dots on the 3rd and 2nd strings), G (two black dots on the 3rd and 2nd strings), F (two black dots on the 2nd and 3rd strings), F (two black dots on the 2nd and 3rd strings), and E (two black dots on the 2nd and 3rd strings).

O Christmas Tree

Chord diagrams for C, F, G, and A are shown above the first staff. The notes on the staff are: C4, D4, E4, F4, G4, A4, B4, C5.

Chord diagrams for A, G, B, E, and F are shown above the second staff. The notes on the staff are: A4, B4, C5, B4, A4, G4, F4, E4.

Play that part twice

Chord diagrams for C, A, D, and B are shown above the first staff. The notes on the staff are: C4, D4, E4, F4, G4, A4, B4, C5.

Chord diagrams for B, G, C, and A are shown above the second staff. The notes on the staff are: A4, B4, C5, B4, A4, G4, F4, E4.

Then play the first part once again.

The Lion Sleeps Tonight

In the jun -gle the migh -ty jun -gle

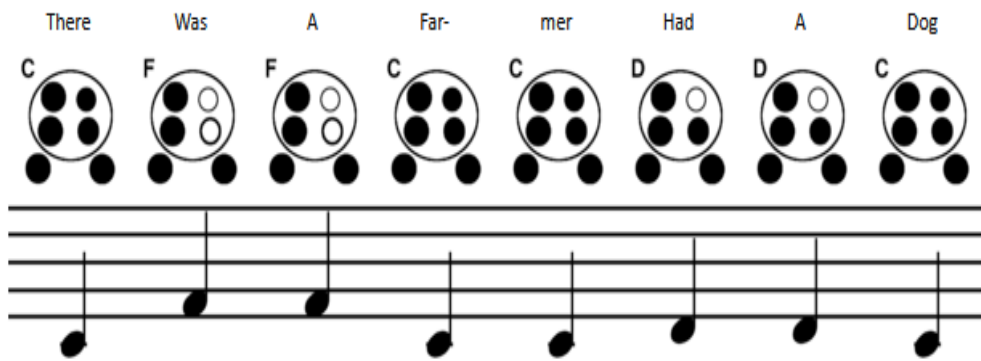
The li -on sleeps to -night

In the jun -gle the qui -et jun -gle

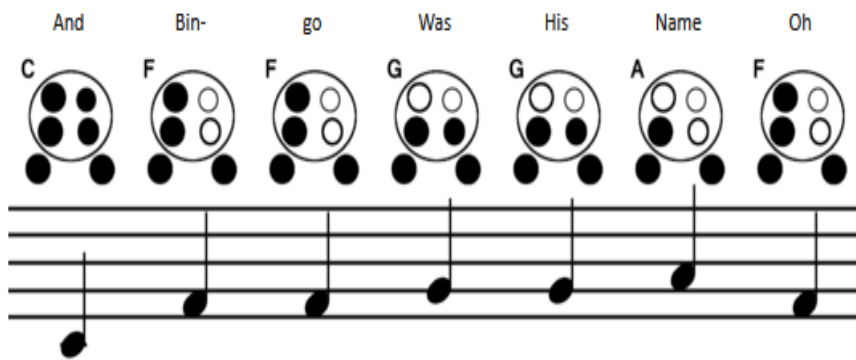
The li -on sleeps to -night

BINGO

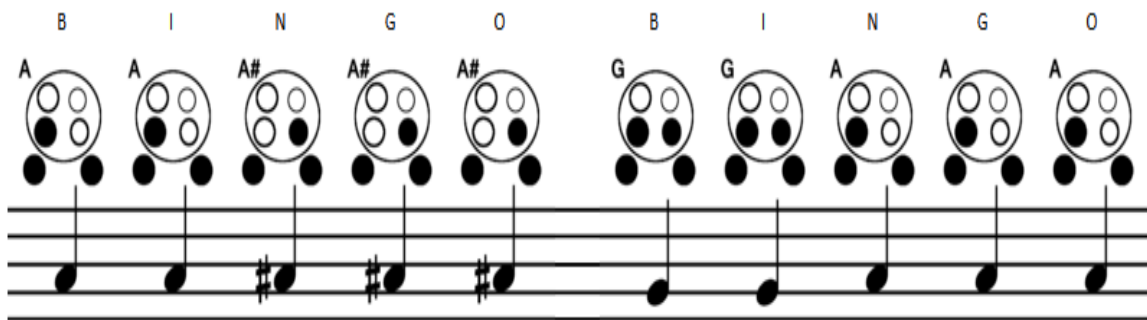
There Was A Far- mer Had A Dog



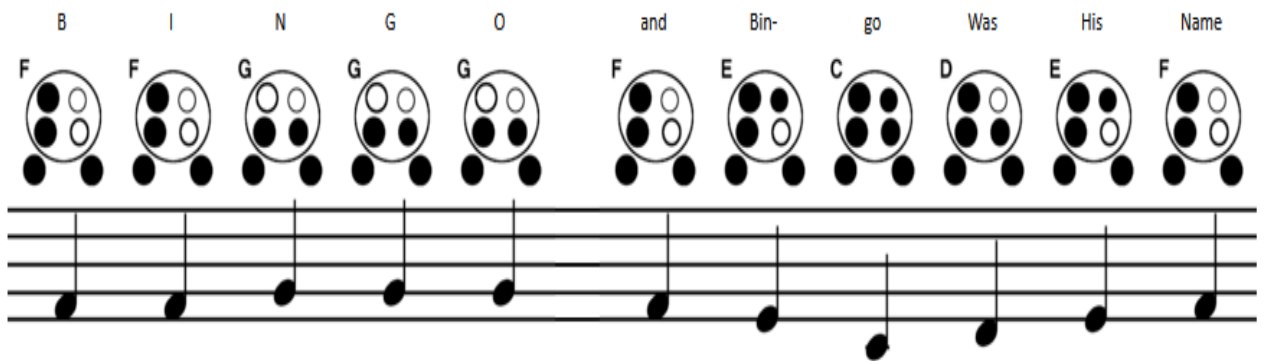
And Bin- go Was His Name Oh



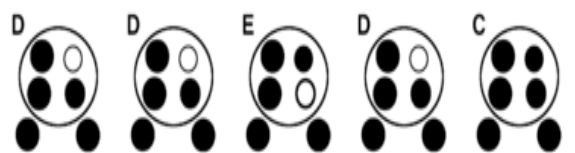
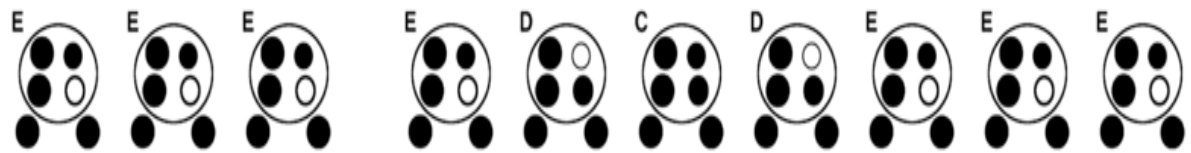
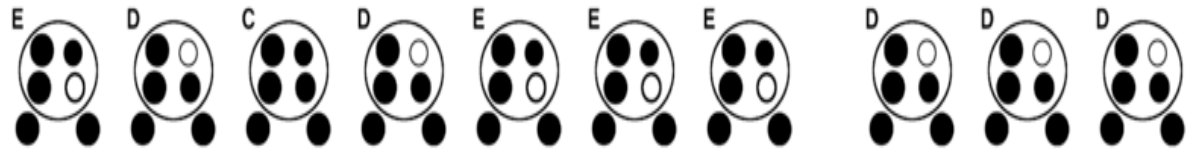
B I N G O B I N G O



B I N G O and Bin- go Was His Name



Mary Had A Little Lamb



Happy Birthday

C C D C F E

The first line of the guitar score consists of six chords: C, C, D, C, F, and E. Each chord is represented by a circular diagram with four dots (black for solid, white for hollow) on a four-string fretboard. Below the diagrams is a musical staff with six quarter notes corresponding to the chords: C4, C4, D4, C4, F4, and E4.

C C D C G F

The second line of the guitar score consists of six chords: C, C, D, C, G, and F. Each chord is represented by a circular diagram with four dots (black for solid, white for hollow) on a four-string fretboard. Below the diagrams is a musical staff with six quarter notes corresponding to the chords: C4, C4, D4, C4, G4, and F4.

C C C A F E D

The third line of the guitar score consists of seven chords: C, C, C, A, F, E, and D. Each chord is represented by a circular diagram with four dots (black for solid, white for hollow) on a four-string fretboard. Below the diagrams is a musical staff with seven quarter notes corresponding to the chords: C4, C4, C4, A4, F4, E4, and D4.

B B A F G F

The fourth line of the guitar score consists of six chords: B, B, A, F, G, and F. Each chord is represented by a circular diagram with four dots (black for solid, white for hollow) on a four-string fretboard. Below the diagrams is a musical staff with six quarter notes corresponding to the chords: B4, B4, A4, F4, G4, and F4.